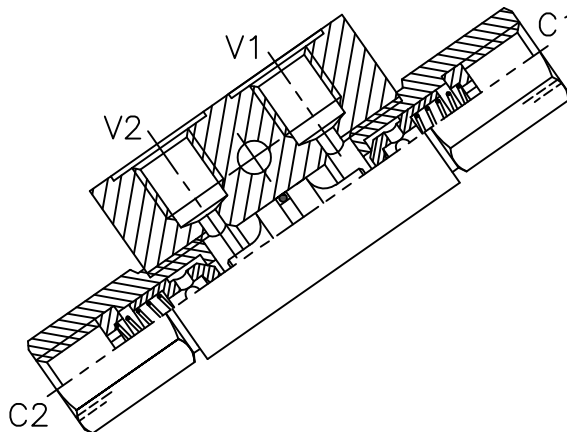
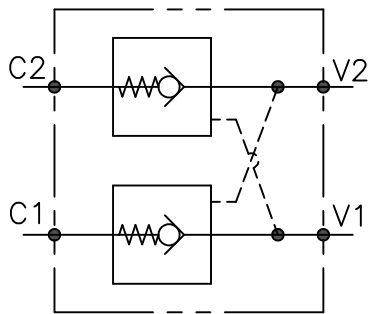


VNR-SO-DE-...-L-...



CARATTERISTICHE

Luce nominale

Portata min/max

Pressione max. di picco

Pressione max. di taratura

Rapporto di pilotaggio standard

Temperatura ambiente

Temperatura olio

Filtraggio consigliato

Coppia di serraggio

Peso

Pagina seguente/next page

Pagina seguente/next page

350 bar 5075 PSI

Pagina seguente/next page

Pagina seguente/next page

-30°C + 50°C

-30°C + 80°C

30 + 50

Pagina seguente/next page

0.7-0.9-0.1-2 kg

PERFORMANCE

Rated size

Min/max flow-rate

Max peak pressure

Max setting pressure

Standard pilot ratio

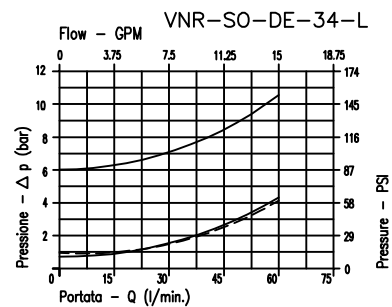
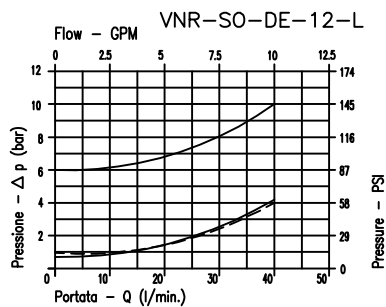
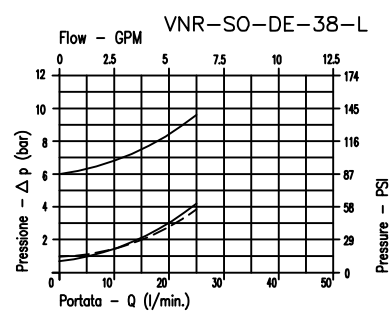
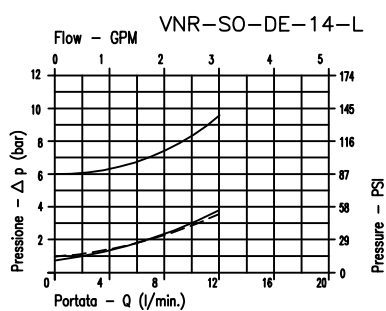
Room temperature

Oil temperature

Recommended filtration

Tightening torque

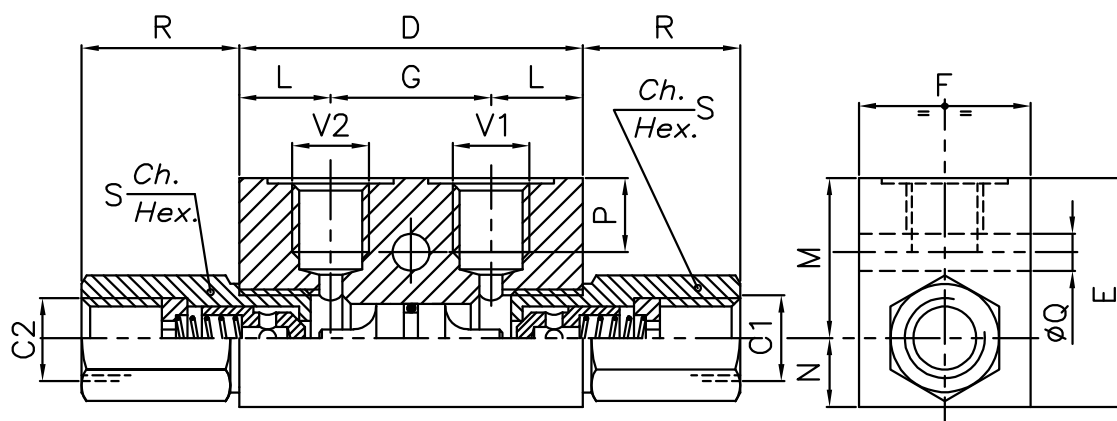
Weight



——— 8Bar Flusso libero (Free flow)
 - - - 1Bar Flusso libero (Free flow)
 ——— Flusso pilotato (Piloted open)

Viscosita' olio 46 cSt a 50 °C
 Oil viscosity 46 cSt at 50 °C

VALVOLA DI BLOCCO A DOPPIO EFFETTO PILOTATA
ALUMINIUM DOUBLE PILOT CHECK VALVE



DIMENSIONI
DIMENSIONS

NUMERO VALVOLA VALVE NUMBER	D	E	F	G	L	M	N	P	Q	R	S	Attacchi Port size V2-C2 V1-C1 GAS (BSPP)	Luce nominale Rated size DN	Rapporto di pilotaggio Pilot ratio	Portata max max flow-rate l/min-GPM
030	60	40	30	28	16	28	12	13	6.5	27,5	19	1/4"	6	4:1	10-3.2
031	70	50	35	38	16	35	15	15	6.5	29	24	3/8"	8	4:1	23-6
032	80	50	35	38	21	34	16	15	6.5	32	27	1/2"	11	4:1	40-10.6
033	100	60	40	50	25	39	21	15	8.5	41	38	3/4"	16	3.5:1	60-15.8

COLLETTORE IN ALLUMINIO
ALUMINIUM BODY

CODICE DI ORDINAZIONE
HOW TO ORDER

003	033	0	W	0
Numero valvola / Valve number	Pistone di pilotaggio Pilot piston	Inizio apertura Cracking pressure		
030	A O-RING sul pist. di pilotaggio Pilot piston O-RING	J 1 bar Molla (colore nero) Spring (black)		
031	O Senza O-RING sul pist. di pilotaggio No pilot piston O-RING	W 6÷8 bar Molla (colore giallo) Spring (yellow)		
032				
033				