

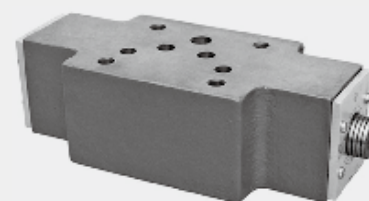


4.6

Double Throttle/ Check Valve

Type Z2FS6, 10, 16, 22...30

Sizes 6, 10, 16, 22
Up to 350bar
Up to 360 L/min



Contents

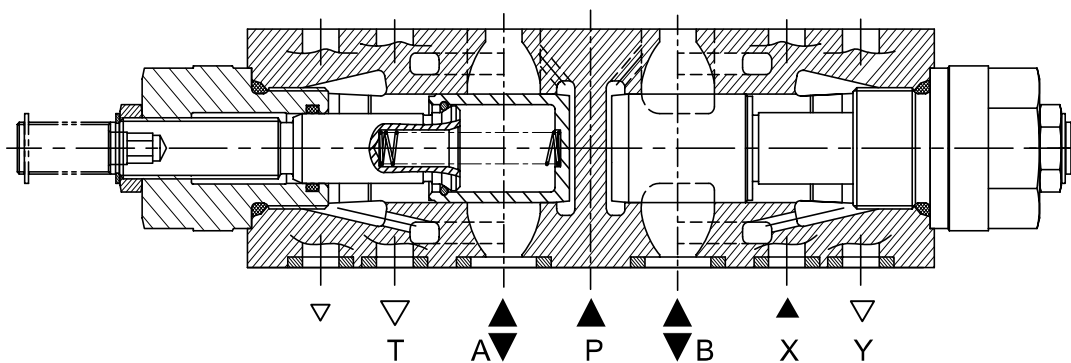
Function and configurations	02
Symbols	02-03
Ordering code	04
Technical data	04
Characteristic curves	05
Unit dimensions	06-07

Features

- Sandwich plate valve
- Porting pattern to DIN 24 340 form A and ISO4401
- For limiting the main or control fluid flow of 2 actuator connections
- 3 adjustment elements:
 - Lockable rotary knob with scale
 - Spindle with internal hexagon and scale
 - Rotary knob with scale
- For meter-in or meter-out control

Function and configuration

Valve type Z2FS is a double throttle/check valve with sandwich plate structure. It is used to control the flow by changing the throttling. In the opposite direction, fluid flows freely through the check valve. For Z2FS10, depending on the installation position, the throttling effect may be arranged as a meter-in or a meter-out control. While for Z2FS16 and 22, depending on the model (S or S2) throttling may take place in either meter-in or meter-out, and at the same time the two operating oil chambers are connected.



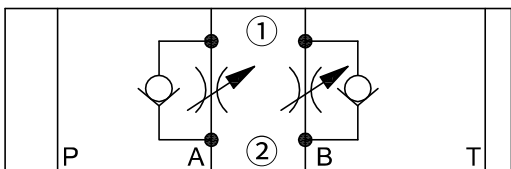
Structure chart of double throttle/Check Valve

04

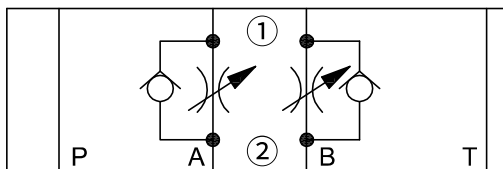
Symbols (① = valve side, ② = sub-plate side)

size:6

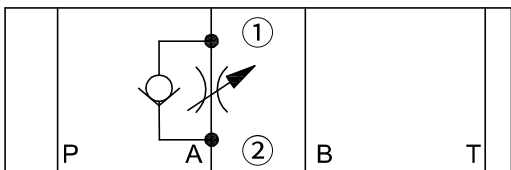
Type:Z2FS6-30/ (meter-in control)



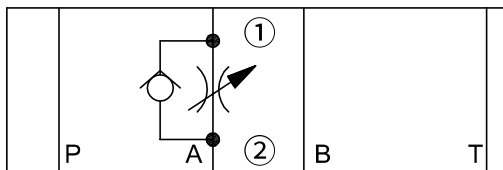
Type:Z2FS6-30/ (meter-out control)



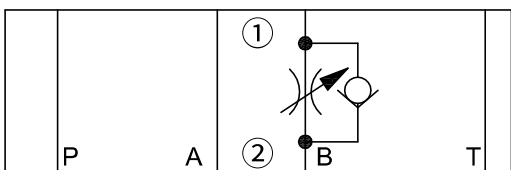
Type:Z2FS6A-30/ (meter-in control)



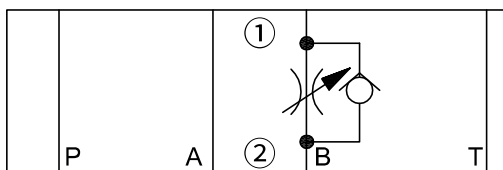
Type:Z2FS6A-30/ (meter-out control)



Type:Z2FS6B-30/ (meter-in control)



Type:Z2FS6B-30/ (meter-out control)



Ordering code

Z2FS		— 30 /		*
------	--	--------	--	---

Double throttle/
check valve

Nominal size 6 =6
 Nominal size 10 =10
 Nominal size 16 =16
 Nominal size 22 =22

Throttle/check valve ports A and B = -
 Throttle/check valve port A = A
 Throttle/check valve port B = B

L30 Series =30

Further details in clear text

No code = NBR seals
 V = FKM seals

No code= Meter-in /meter-out control
 S = Meter-in contro
 S2 = Meter-out control

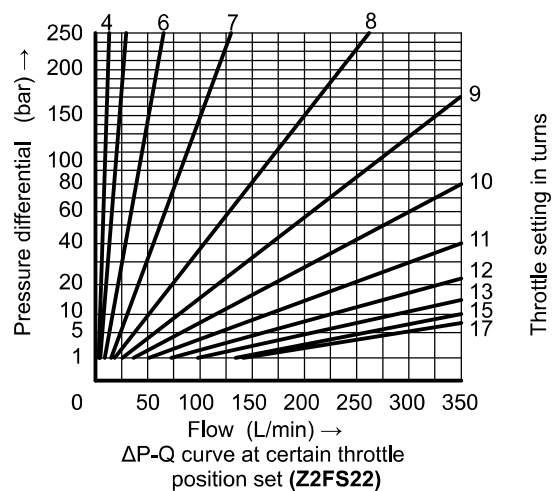
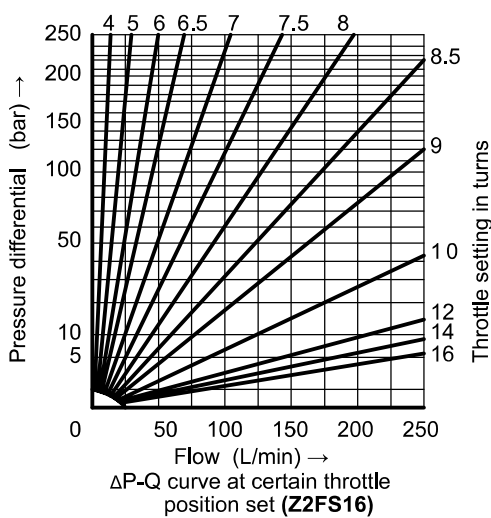
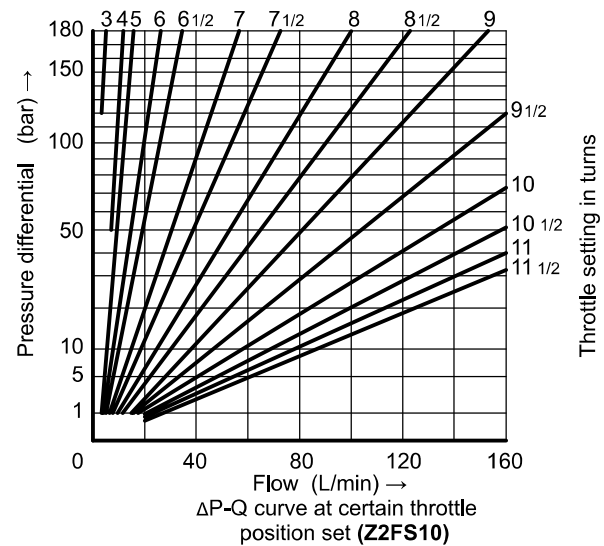
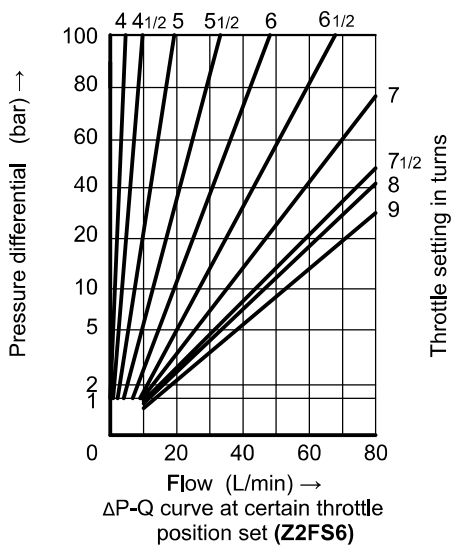
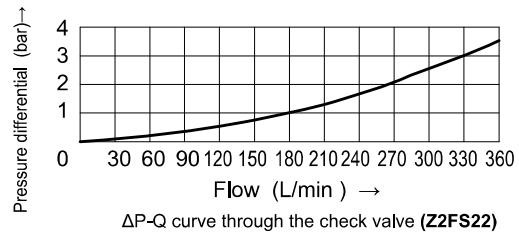
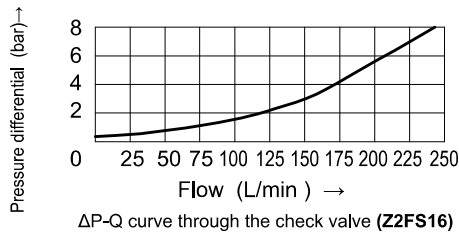
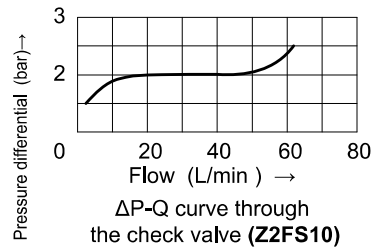
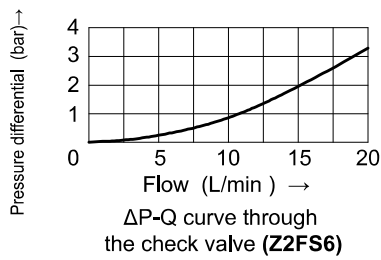
Note: overturning the Z2FS10 by 180° the throttling effect can be arranged as a meter-in or meter-out control.

Technical data

04

Installation position	Optional				
Flow direction	One direction throttle, return through the check valve by another direction				
Fluid	Mineral oil suitable for NBR and FKM seal, Phosphate ester for FKM seal				
Fluid temperature range	°C	-20 to +80			
Degree of contamination	Maximum permissible degree of fluid contamination: Class 9. NAS 1638 or 20/18/15, ISO4406				
Viscosity range	mm ² /s	10 to 800			
Max.operating pressure	bar	to 350			
Nominal size		6	10	16	22
Weight	kg	0.9	3.1	4.7	8

Characteristic curves (Measured at $\vartheta_{oil}=40^{\circ}\text{C} \pm 5^{\circ}\text{C}$, using HLP46)

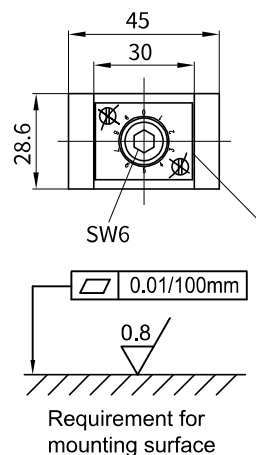
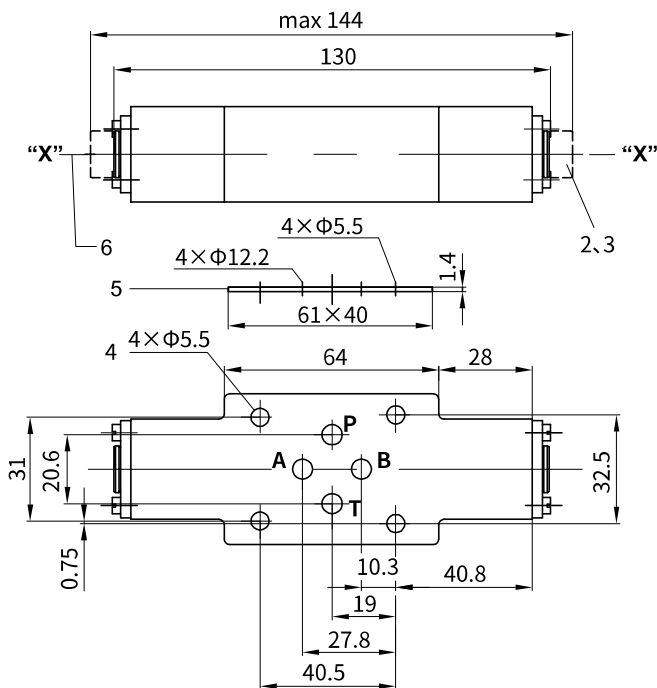


04

Unit dimensions:

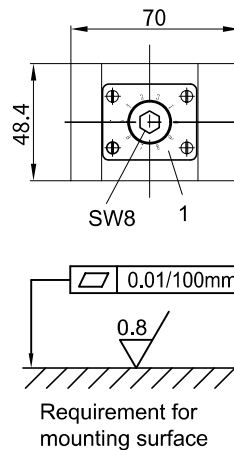
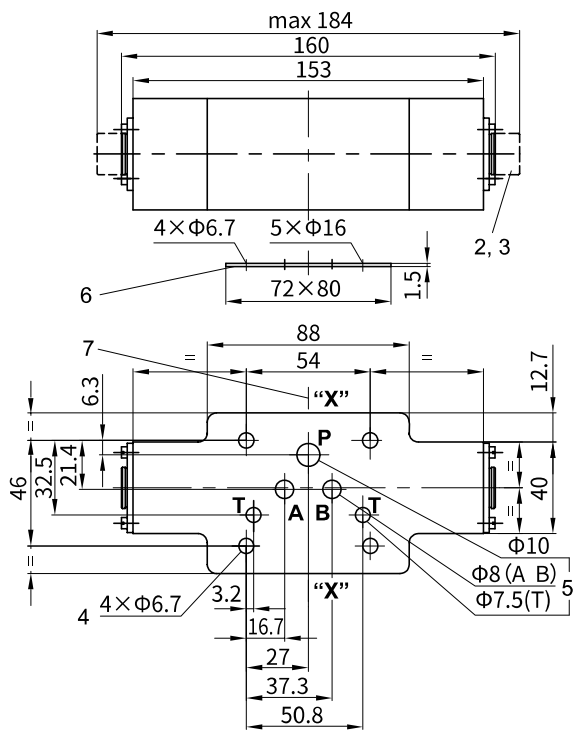
(Dimensions in mm)

• Outline dimension of double throttle/Check Valve Type Z2FS6



- 1 Nameplate
- 2 Adjustable bolt
- 3 Turn anti-clockwise=increases flow, turn clockwise=decreases flow
- 4 Valve fixing holes
- 5 O-ring plate
- 6 To change from meter-in to meter-out, rotate the unit around the "X - X" axis

• Outline dimension of double throttle/Check Valve Type Z2FS10



- 1 Nameplate
- 2 Adjustable bolt
- 3 Turn anti-clockwise = increases flow, turn clockwise = decreases flow
- 4 Valve fixing holes
- 5 Port (A, B, P, T)
- 6 O-ring plate
- 7 To change from meter-in to meter-out, rotate the unit around the "X - X" axis

04

