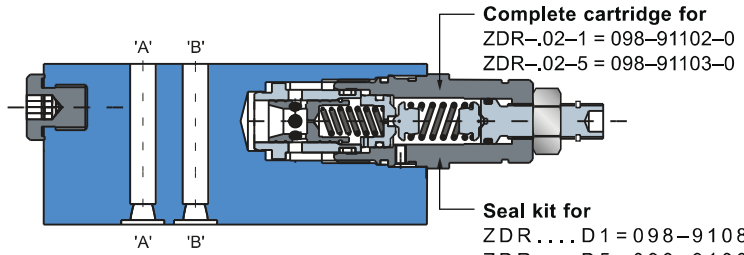


PRESSURE REDUCING VALVE - ZDR



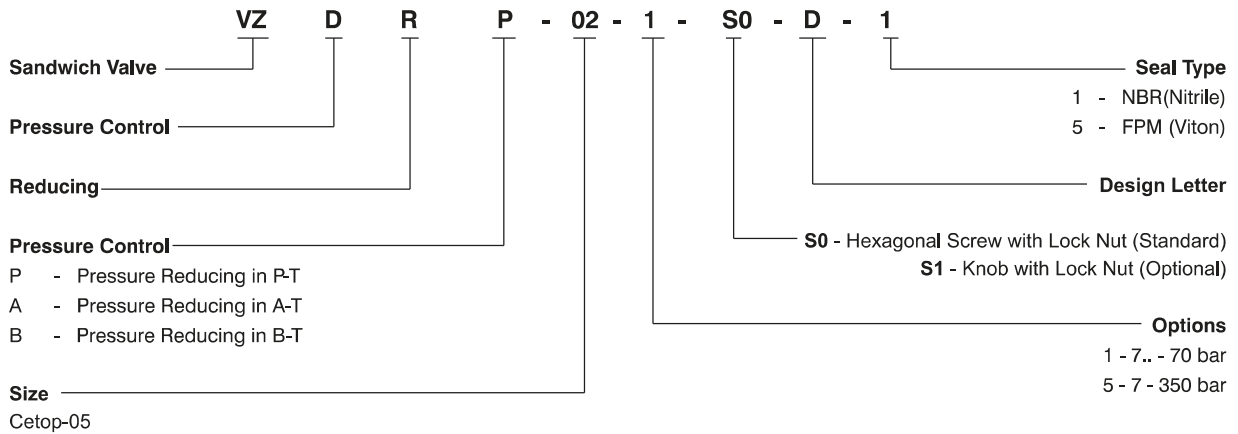
- Operating pressure range
 - ZDR-P 7...70/350 bar
 - ZDR-A / B 7...70/315 bar
- Max. flow 120 l/min
- Viscosity range 10 ... 500 cSt
- Fluid temperature range -18 ... + 60°C
- Pilot oil (P, A, B - T)max. 0.3 l/min



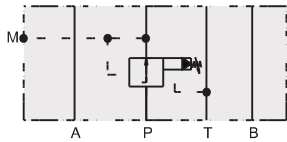
Complete cartridge for
 ZDR-.02-1 = 098-91102-0
 ZDR-.02-5 = 098-91103-0

Seal kit for
 ZDR....D1 = 098-91082-0
 ZDR....D5 = 098-91083-0

ORDERING CODE :



PRESSURE REDUCING IN P WITH PRESSURE GAUGE PORT

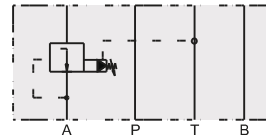


Model Code:
 ZDR-P02-1-S0-D1
 ZDR-P02-5-S0-D1

Order No.
 098-91050-0
 098-91051-0

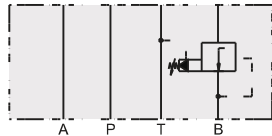
1 = 7... 70 bar
 5 = 7... 350 bar

PRESSURE REDUCING IN A



Model Code:
 ZDR-A02-1-S0-D1
 ZDR-A02-5-S0-D1

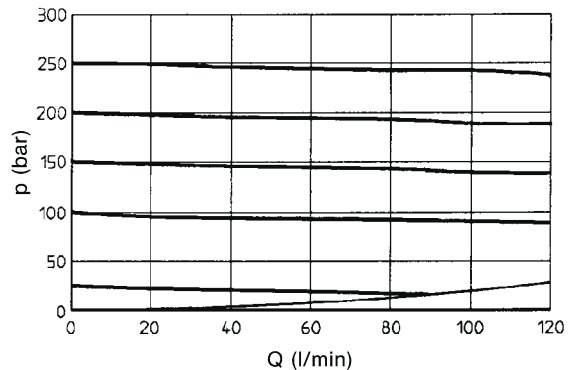
PRESSURE REDUCING IN B



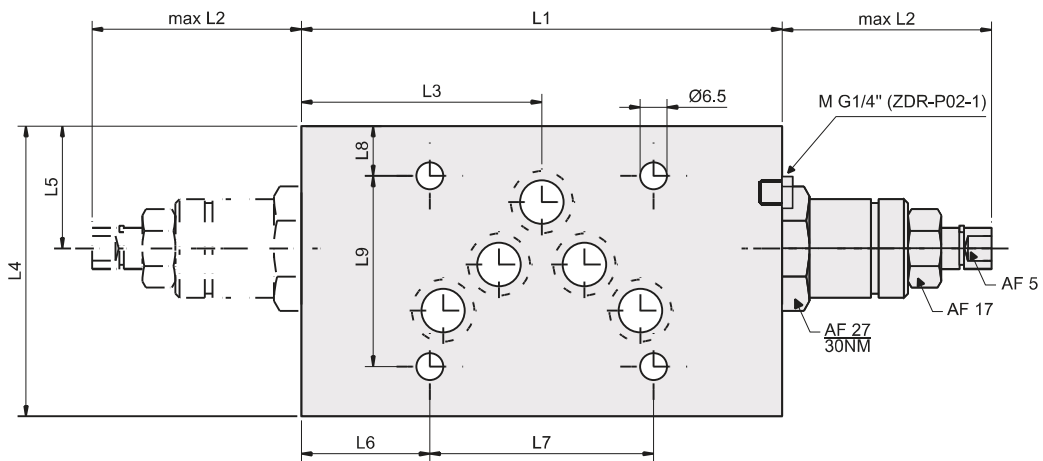
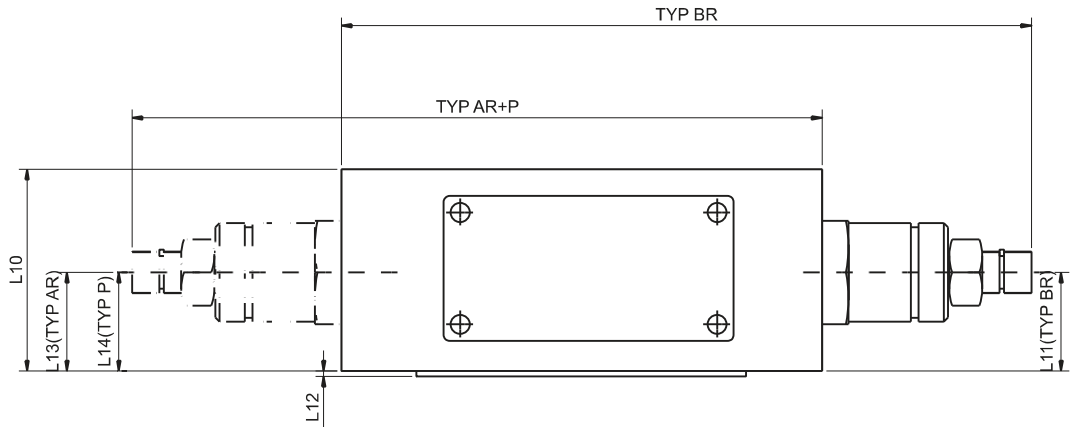
Model Code:
 ZDR-B02-1-S0-D1
 ZDR-B02-5-S0-D1

1 = 7... 70 bar
 5 = 7... 315 bar

ZDR-P/AR/BR02



INSTALLATION - 2.9 / 3.0 kg



| UNITS | L1 | L2 | L3 | L4 | L5 | L6 | L7 | L8 | L9 | L10 | L11 | L12 | L13 | L14 |
|-------|-------|------|------|------|------|------|------|------|------|------|------|------|------|------|
| mm | 116.0 | 50.5 | 58.0 | 70.0 | 29.5 | 31.0 | 54.0 | 12.0 | 46.0 | 50.0 | 23.8 | 1.3 | 23.8 | 26.3 |
| in | 4.56 | 1.99 | 2.28 | 2.75 | 1.16 | 1.22 | 2.12 | 0.47 | 1.18 | 1.96 | 0.94 | 0.05 | 0.94 | 1.03 |

SERVICE INFORMATION:

| MODEL CODE | SPARE PART NO. | DETAILS |
|-------------|----------------|----------------|
| VZDR-02-1 | V098-91102-0 | CARTRIDGE |
| VZDR-02-5 | V098-91103-0 | CARTRIDGE |
| VZDR.....D1 | V098-91082-0 | SEALKIT |
| VZDR.....D5 | V098-91083-0 | SEALKIT |
| VZDR-S | VS16-85742-0 | 'O' RING PLATE |