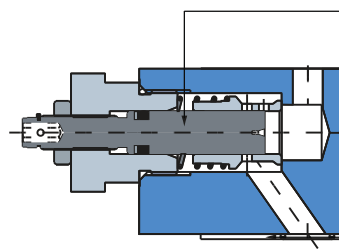


THROTTLE WITH CHECK - ZRD



- Max. operating pressure 350 bar
- Max. flow 160 l/min
- Viscosity range 10 ... 500 cSt
- Fluid temperature range -18 ... +60hC

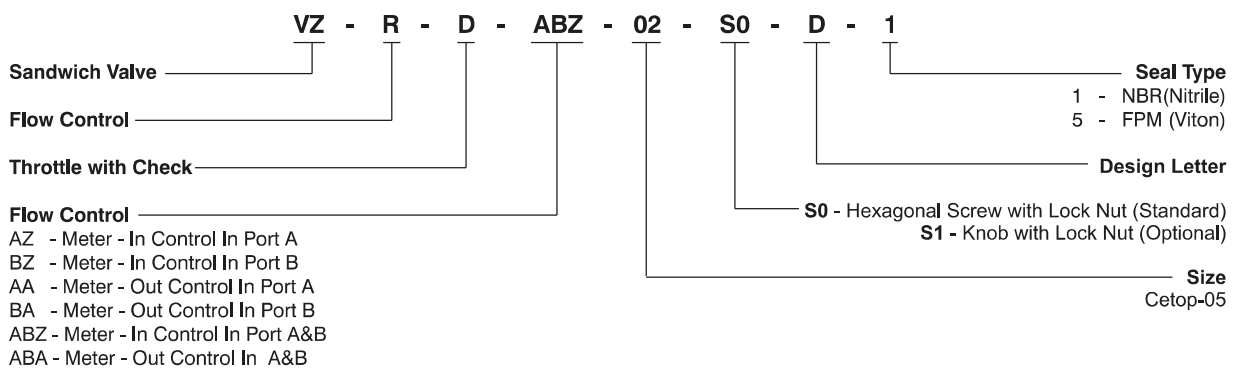


Complete cartridge for
ZRD-.02-1 = 098-91120-0

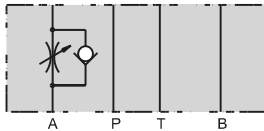
Seal kit for:
ZRD01 ... D1 = 098-91098-0
ZRD01 ... D5 = 098-91099-0

O-Ring Plate
S16-85742-0

ORDERING CODE :

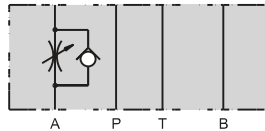


METER - IN CONTROL IN PORT A



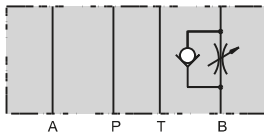
Series: ZRD-AZ02-S0-D1
 Order No. 098-91059-0

METER - OUT CONTROL IN PORT A



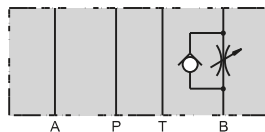
Series: ZRD-AA02-S0-D1
 Order No. 098-91015-0

METER - IN CONTROL IN PORT B



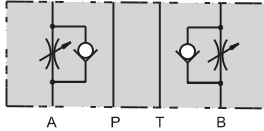
Series: ZRD-BZ02-S0-D1
 Order No. 098-91060-0

METER - OUT CONTROL IN PORT B



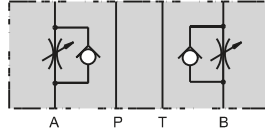
Series: ZRD-BA02-S0-D1
 Order No. 098-91016-0

METER - IN CONTROL IN PORT A&B

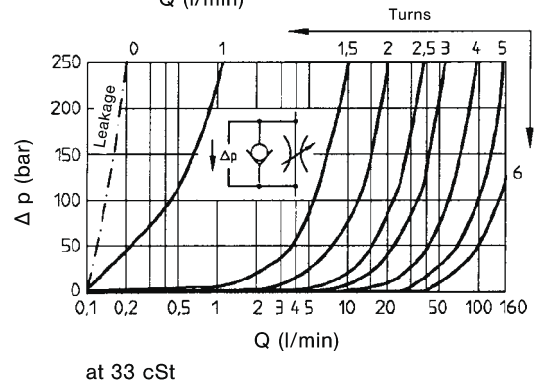
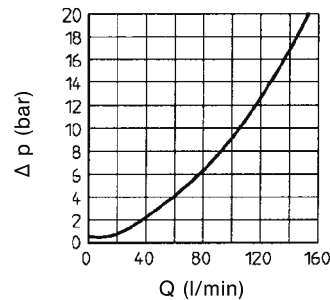


Series: ZRD-ABZ02-S0-D1
 Order No. 098-91061-0

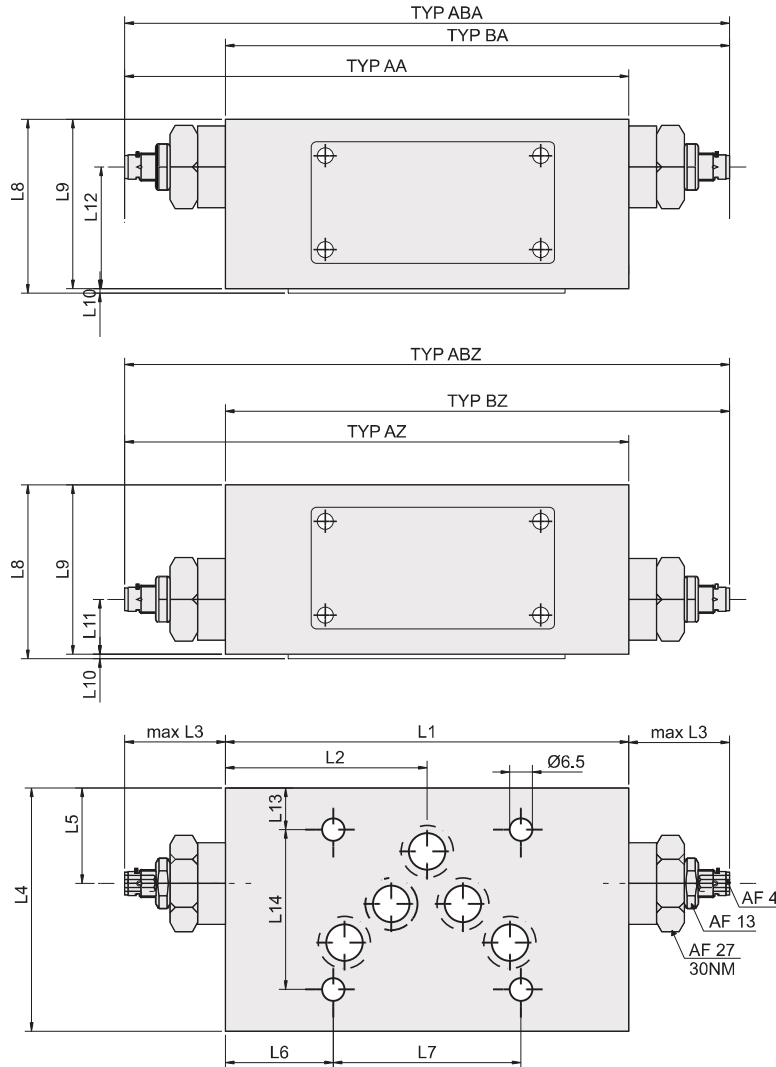
METER - OUT CONTROL IN A&B



Series: ZRD-ABA02-S0-D1
 Order No. 098-91017-0



INSTALLATION - 2.8 / 2.9 kg



UNITS	L1	L2	L3	L4	L5	L6	L7	L8	L9	L10	L11	L12	L13	L14
mm	116.0	58.0	22.0	70.0	27.5	31.0	54.0	50.0	48.7	1.3	16.3	35.0	12.0	46
in	4.56	2.28	0.87	2.75	1.08	1.22	2.12	1.96	1.91	0.05	0.64	1.37	0.47	1.81

SERVICE INFORMATION:

MODEL CODE	SPARE PART NO.	DETAILS
VZRD-02	V098-91120-0	CARTRIDGE
VZRD02.....D1	V098-91098-0	SEALKIT
VZRD02.....D5	V098-91099-0	SEALKIT
VZRD-S	VS26-85742-0	O-RING PLATE